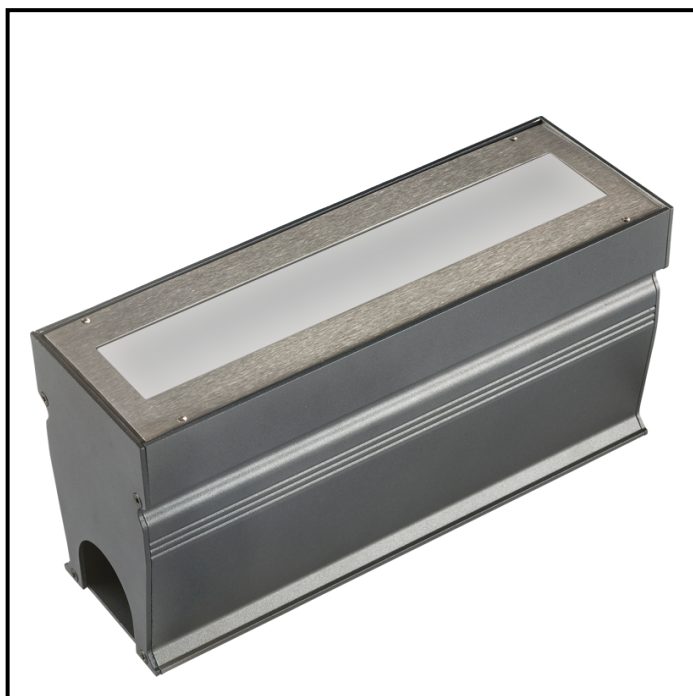


X-LINE UP² – Frosted glass - 6W to 36W - up to 2178 lm - 350 mm to 950 mm
822-3660 X-LINE UP² 12 230V CONTROL ambre dépoli L350mm 12W IP67



Light fixture



Blockout



X-LINE UP² – Frosted glass - 6W to 36W - up to 2178 lm - 350 mm to 950 mm

822-3660 X-LINE UP² 12 230V CONTROL ambre dépoli L350mm 12W IP67

APPLICATION

LED inground luminaire (not suitable for walls and roads) for outdoor lighting or architectural lighting.
This product requires good drainage.
Accentuation, wallwasher and marker light.



LIGHTING FEATURES

CRI70. High-power LED luminaire. Monochrome version, RGB MIX or WHITE MIX.



ELECTRICAL FEATURES

230V mains connection. Integrated driver. Built-in 10 kV/5 kA surge protection. Control to be specified when ordering. Default cable length 1.5m. DMX version contains the plug and socket CONNECT SYSTEM for easy installation.

Lifetime: 60 000 hours L80 B10

CABLES USED

Version fixe : câble HO7RN-F 3G1,5mm² : phase (marron), neutre (bleu) et terre (vert/jaune).
Longueur : 150cm.
Version pilotable en DMX : câble CONNECT SYSTEM. Longueur : 50cm.
Version pilotable en DALI : câble HO7RN-F 3G1,5mm² : phase (marron), neutre (bleu) et terre (vert/jaune) + câble 2x0,5mm² : noir- et rouge+. Longueur : 150cm.

MECHANICAL FEATURES

IP67, IK10. 304 stainless steel frame. Body in painted aluminium. Glass (thickness 19 mm) frosted.
Supplied with blackout (thickness 5 mm) in Surtec 650 treated and painted aluminium.
Weights: 350mm : 5,8 kg. 650mm : 10,3 kg. 950mm : 15 kg.

WARRANTY

5-year warranty: on LED module and driver (see the FLUX conditions).

LUMEN DATA

Lumen nominal total amber (lm)	315,6
lm/W LED amber	75,1
Qty LED	12
Ta max.	30°C
Tj (à 25°C)	85°C

INRUSH CURRENT

Inrush Current (A)	40
--------------------	----

POWER

Puissance Led Produit (W)	4,2
---------------------------	-----

