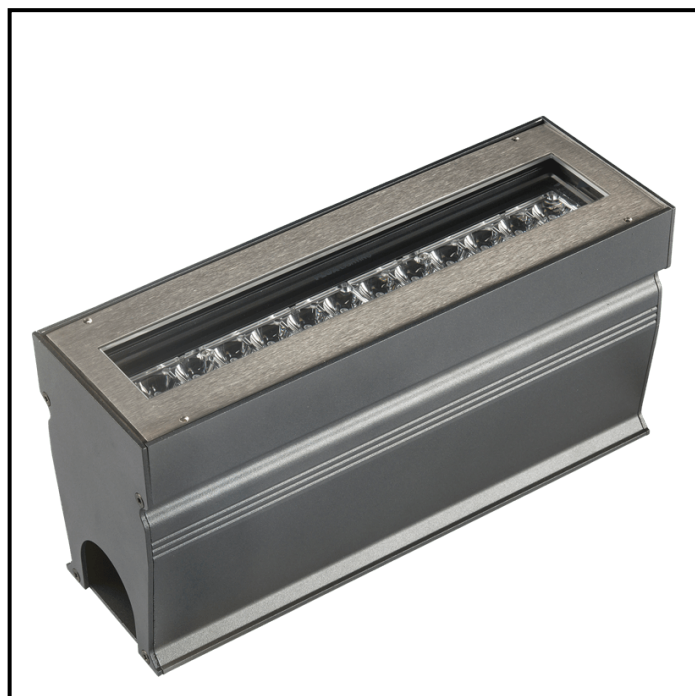
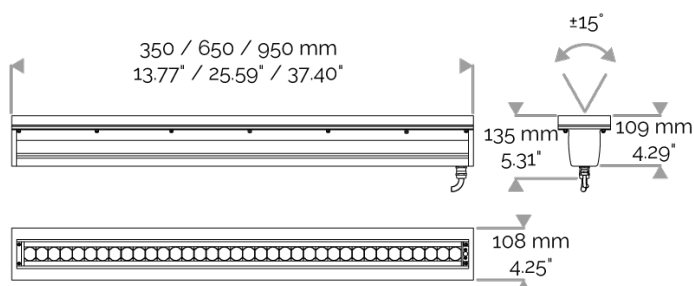


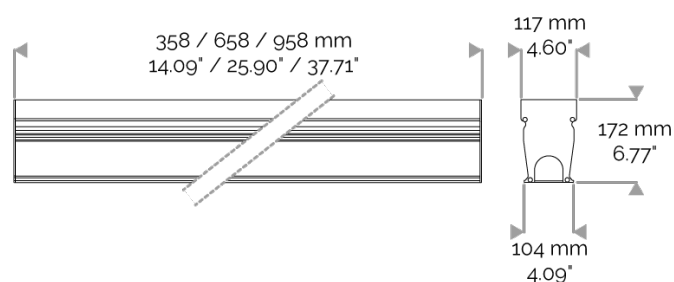
X-LINE UP² - Clear glass - 12W to 36W - up to 3726 lm - 350 mm to 950 mm
822-3590-HT X-LINE UP² 24 230V CONTROL royal blue 2x22.5° L650mm 12W IP67



Light fixture



Blockout



X-LINE UP² - Clear glass - 12W to 36W - up to 3726 lm - 350 mm to 950 mm

822-3590-HT X-LINE UP² 24 230V CONTROL royal blue 2x22.5° L650mm 12W IP67

APPLICATION

Inground luminaire (not suitable for walls and roads), adjustable LED for outdoor lighting or architectural lighting. This product requires good drainage.
Accentuation, wallwasher and marker light.



LIGHTING FEATURES

CRI70. High-power LED luminaire. Monochrome version, RGB MIX or WHITE MIX.



ELECTRICAL FEATURES

230V mains connection. Integrated driver. Built-in 10 kV/5 kA surge protection. Control to be specified when ordering. Default cable length 1.5m. DMX version contains the plug and socket CONNECT SYSTEM for easy installation.

CABLES USED

Version fixe : câble HO7RN-F 3G1,5mm² : phase (marron), neutre (bleu) et terre (vert/jaune). Longueur : 150cm.
Version pilotable en DMX : câble CONNECT SYSTEM. Longueur : 50cm.
Version pilotable en DALI : câble HO7RN-F 3G1,5mm² : phase (marron), neutre (bleu) et terre (vert/jaune) + câble 2x0,5mm² : noir- et rouge+. Longueur : 150cm.

MECHANICAL FEATURES

IP67, IK10. 304 stainless steel frame. Body in painted aluminium. Glass (thickness 19 mm) clear. Adjustable clear glass version can be tilted +/- 15°. Supplied with blackout (thickness 5 mm) in Surtec 650 treated and painted aluminium. Weights: 350mm : 5,8 kg. 650mm : 10,3 kg. 950mm : 15 kg.

WARRANTY

5-year warranty: on LED module and driver (see the FLUX conditions).

Lifetime: 60 000 hours L80 B10

LUMEN DATA

Lumen nominal total royal blue (mW)	6388,8
mW/W LED royal blue	543,3
Qty LED	24
Ta max.	50°C
Tj (at 25°C)	85°C

INRUSH CURRENT

Inrush Current (A)	50
Inrush Current Time (µs)	200

POWER

Product Led Power (W)	11,8
-----------------------	------

