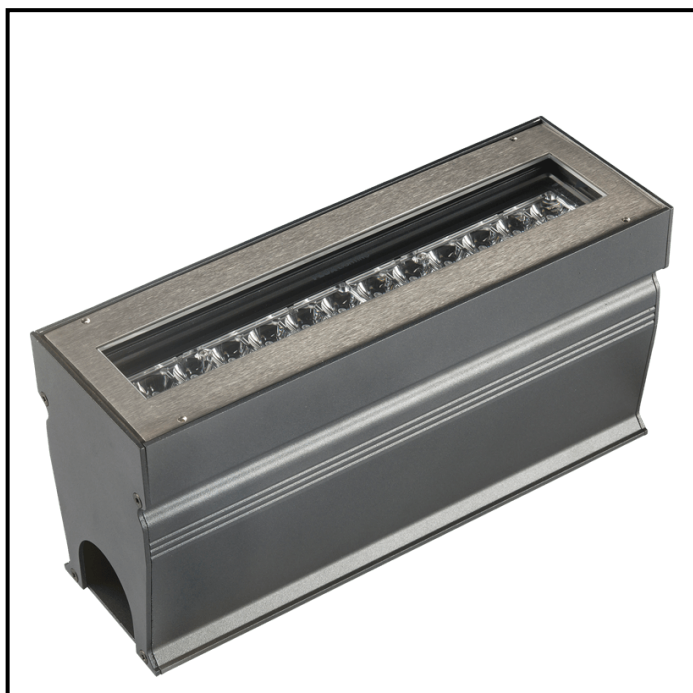


**X-LINE UP<sup>2</sup> - Clear glass - 12W to 36W - up to 3726 lm - 350 mm to 950 mm**  
**822-3065 X-LINE UP<sup>2</sup> 36 230V CONTROL warm white 2700K 2x2° L950mm 36W IP67**



Light fixture



Blockout



# X-LINE UP<sup>2</sup> - Clear glass - 12W to 36W - up to 3726 lm - 350 mm to 950 mm

## 822-3065 X-LINE UP<sup>2</sup> 36 230V CONTROL warm white 2700K 2x2° L950mm 36W IP67

### APPLICATION

Inground luminaire (not suitable for walls and roads), adjustable LED for outdoor lighting or architectural lighting. This product requires good drainage.  
Accentuation, wallwasher and marker light.



### LIGHTING FEATURES

CRI70. High-power LED luminaire. Monochrome version, RGB MIX or WHITE MIX.



### ELECTRICAL FEATURES

230V mains connection. Integrated driver. Built-in 10 kV/5 kA surge protection. Control to be specified when ordering. Default cable length 1.5m. DMX version contains the plug and socket CONNECT SYSTEM for easy installation.

### CABLES USED

Version fixe : câble HO7RN-F 3G1,5mm<sup>2</sup> : phase (marron), neutre (bleu) et terre (vert/jaune). Longueur : 150cm.

Version pilotable en DMX : câble CONNECT SYSTEM. Longueur : 50cm.

Version pilotable en DALI : câble HO7RN-F 3G1,5mm<sup>2</sup> : phase (marron), neutre (bleu) et terre (vert/jaune) + câble 2x0,5mm<sup>2</sup> : noir- et rouge+. Longueur : 150cm.

### MECHANICAL FEATURES

IP67, IK10. 304 stainless steel frame. Body in painted aluminium. Glass (thickness 19 mm) clear. Adjustable clear glass version can be tilted +/- 15°. Supplied with blackout (thickness 5 mm) in Surtec 650 treated and painted aluminium. Weights: 350mm : 5,8 kg. 650mm : 10,3 kg. 950mm : 15 kg.

### WARRANTY

5-year warranty: on LED module and driver (see the FLUX conditions).

**Lifetime: 60 000 hours L80 B10**

### LUMEN DATA

Lumen nominal total warm white 2700K (lm)	3492
lm/W LED warm white 2700K	96
Qty LED	36
Ta max.	30°C
Tj (at 25°C)	85°C

### INRUSH CURRENT

Inrush Current (A)	55
Inrush Current Time (µs)	270

### POWER

Product Led Power (W)	36,4
-----------------------	------

