

ODO BOLLARD - Glare-free, tamperproof & suitable for disable - 11W - Up to 1899 lm

831-3100-SA ODO BOLLARD DETECT autonomous 8 LED WALK 11W 3000K IP66 CLI



Adapter in option



ODO BOLLARD - Glare-free, tamperproof & suitable for disable - 11W - Up to 1899 lm

831-3100-SA ODO BOLLARD DETECT autonomous 8 LED WALK 11W 3000K IP66 CLI

APPLICATION

Tamperproof LED bollard, glare-free. Suitable for persons with reduced mobility area, path illumination, cycle lanes, pedestrian streets. PRM: spacing of bollards up to 10 m. ULR = 0%.

LIGHTING FEATURES

CRI70. Single circuit, direction of the LED light output to be specified when ordering: (Beam forwards). 8 LED optics cluster: WALK. Spacing up to 10 times the height of fire, lighting to the front up to 2 times the height.

ELECTRICAL FEATURES

230V AC (except for the USA) mains connection. Zhaga LED module. Integrated Zhaga DALI driver. Built-in 10 kV lightning and surge protection. Cable is not visible. Cable length to be specified in meters when ordering. Control to be specified when ordering (CLO (constant light output), AstroDIM, MainsDIM, StepDIM). Maximum ambient temperature: 30°C. For the USA please consult us.

CABLES USED

For class I (AstroDIM, StepDIM, MainsDIM): HO7RN-F 5G1,5mm² cable (blue, brown, green/yellow, grey, black).

For class I (StepDIM): HO7RN-F 4G1,5mm² cable (grey, brown, green/yellow, black).

For class II (AstroDIM, StepDIM, MainsDIM): 4x1,5mm² cable (blue, brown, grey, black).

MECHANICAL FEATURES

IP66, IK10+. Die-cast aluminium luminaire, anti-corrosion treatment prior to polyester powder coating. Extruded aluminium tube, thickness 6 mm. Decorative base plate. Position of the inspection hatch on left or right, opened with 2 tamper-proof "snake-eye" screws. Captive stainless steel fasteners with Delta Seal® galvanic tamperproof treatment. RAL colour to be specified when ordering. Wind pressure = 0,15m². Weight: 15 kg.

STANDARDS

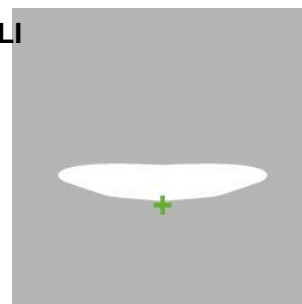
This product qualifies for RES-EC-104 Energy Saving Certificates.

MAINTENANCE

Interchangeable LED modules

WARRANTY

5-year warranty: on LED module and driver (see the FLUX conditions).



Walk



Lifetime: 100 000 hours L80 B10

LUMEN DATA

Lumen nominal total warm white 3000K (lm)	1801
lm/W LED warm white 3000K	161
lm/W product warm white 3000K	120
Qty LED	8
Ta max.	30°C
Tj (at 25°C)	85°C

INRUSH CURRENT

Inrush Current (A)	26
Inrush Current Time (µs)	180

POWER

Product Led Power (W)	11,2
Product Power (W)	15